

# Database

We create a database consisting of 249 3D models with five categories collected from the Princeton Shape Benchmark (PSB) [SMKF04], COSEG [WAvK\*12], and [vKXZ\*13]. The five categories are vases and teapots (52 models), airplanes and birds (62 models), tables (40 models), chairs (75 models), and bicycles (20 models). Each category contains semantically similar models. The collections of 3D models in our database are shown in Figure 1.

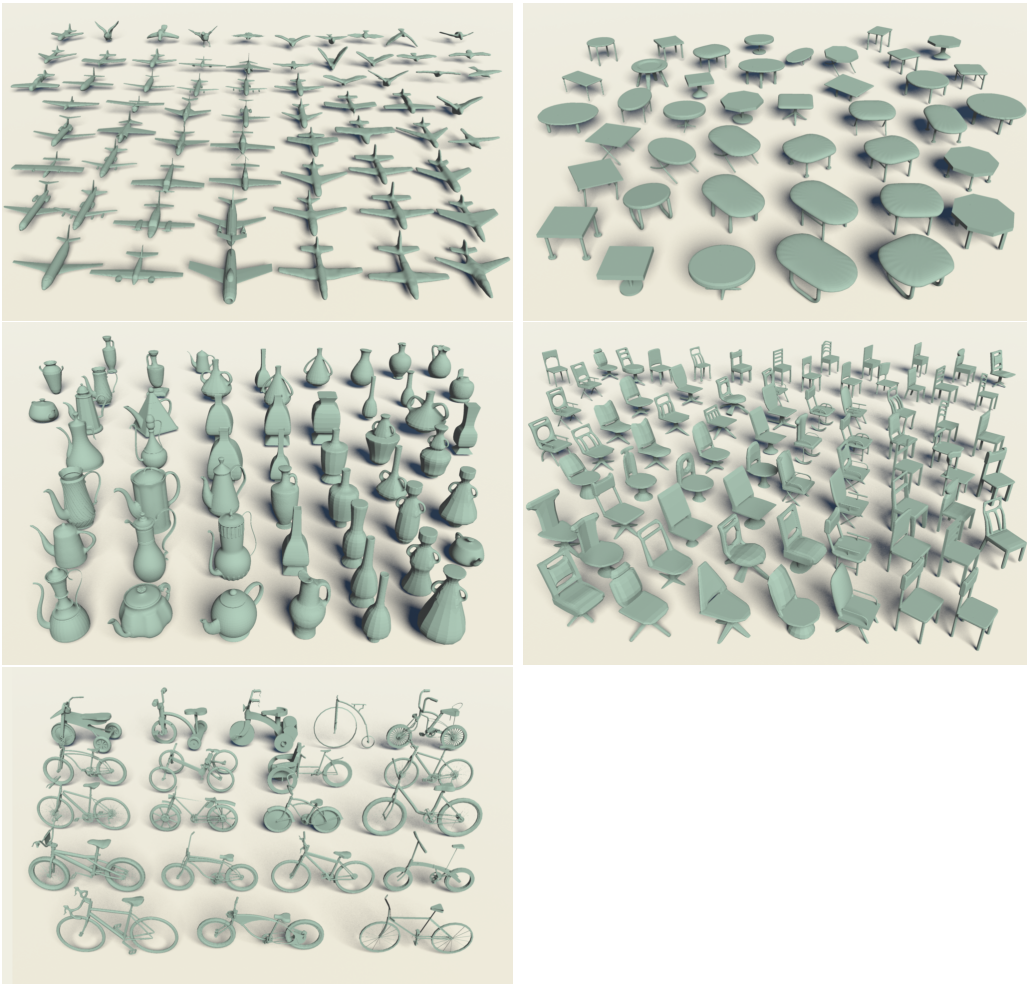


Figure 1: Our database consists of 249 3D models which are grouped into five categories, i.e., vases and teapots, airplanes and birds, tables, chairs, and bicycles.