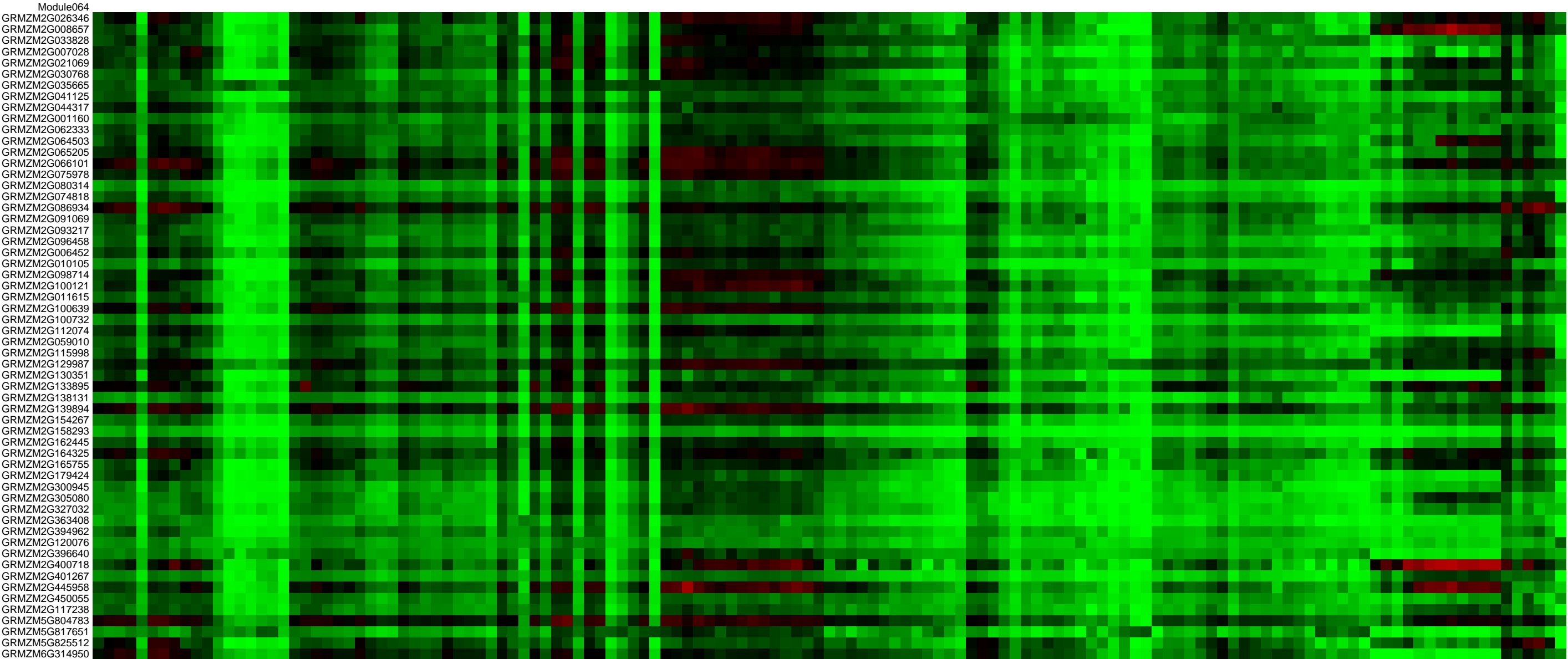


Legend : Log₂ Expression Value



0 2.5 5 7.5 10

- SRP010680_B73_10DAP_Whole seed
- SRP010680_B73_12DAP_Whole seed
- SRP010680_B73_14DAP_Whole seed
- SRP010680_B73_16DAP_Whole seed
- SRP010680_B73_24H_Germinating Seed
- SRP010680_B73_12DAP_Endosperm
- SRP010680_B73_14DAP_Endosperm
- SRP010680_B73_16DAP_Endosperm
- SRP010680_B73_18DAP_Endosperm
- SRP010680_B73_V3_Stem and SAM
- SRP010680_B73_6DAS_GH_Primary Root
- SRP010680_B73_V9_Immature Leaves
- SRP010680_B73_V9_Thirteenth Leaf
- SRP010680_B73_V9_Thirteenth Leaf
- SRP010680_B73_V5_Tip of stage_2 Leaf
- SRP010680_B73_V9_Eleventh Leaf
- SRP010680_B73_V9_Thirteenth Leaf
- SRP010680_B73_VT_Thirteenth Leaf
- SRP010680_B73_V9_Fourth elongated internode
- SRP014652_B73_V9_Fourth elongated internode
- SRP014652_B73_20DAP_Embryo
- SRP014652_B73_22DAP_Embryo
- SRP014652_B73_24DAP_Embryo
- SRP014652_B73_26DAP_Embryo
- SRP014652_B73_28DAP_Embryo
- SRP014652_B73_30DAP_Embryo
- SRP014652_B73_32DAP_Embryo
- SRP014652_B73_34DAP_Embryo
- SRP014652_B73_36DAP_Embryo
- SRP014652_B73_38DAP_Embryo
- SRP014652_B73_40DAP_Embryo
- SRP014652_B73_42DAP_Embryo
- SRP014652_B73_44DAP_Embryo
- SRP014652_B73_46DAP_Embryo
- SRP014652_B73_48DAP_Embryo
- SRP014652_B73_50DAP_Embryo
- SRP014652_B73_52DAP_Embryo
- SRP014652_B73_54DAP_Embryo
- SRP014652_B73_56DAP_Embryo
- SRP014652_B73_58DAP_Embryo
- SRP014652_B73_60DAP_Embryo
- SRP014652_B73_62DAP_Embryo
- SRP014652_B73_64DAP_Embryo
- SRP014652_B73_66DAP_Embryo
- SRP014652_B73_68DAP_Embryo
- SRP014652_B73_70DAP_Embryo
- SRP014652_B73_72DAP_Embryo
- SRP014652_B73_74DAP_Embryo
- SRP014652_B73_76DAP_Embryo
- SRP014652_B73_78DAP_Embryo
- SRP014652_B73_80DAP_Embryo
- SRP014652_B73_82DAP_Embryo
- SRP014652_B73_84DAP_Embryo
- SRP014652_B73_86DAP_Embryo
- SRP014652_B73_88DAP_Embryo
- SRP014652_B73_90DAP_Embryo
- SRP014652_B73_92DAP_Embryo
- SRP014652_B73_94DAP_Embryo
- SRP014652_B73_96DAP_Embryo
- SRP014652_B73_98DAP_Embryo
- SRP014652_B73_100DAP_Embryo
- SRP014652_B73_V1_4D PE_Primary root
- SRP014652_B73_R1_Anthers
- SRP014652_B73_R1_Pre_pollination cob
- SRP014652_B73_R1_Silks
- SRP014652_B73_V13_Immature tassel
- SRP014652_B73_V18_Immature cob
- SRP014652_B73_V18_Meiotic tassel
- SRP014652_B73_V1_4D PE_Stem SAM
- SRP014652_B73_V5_Shoot tip
- SRP014652_B73_V1_4D PE_Pooled Leaves
- SRP014652_B73_V3_Topmost leaf
- SRP014652_B73_V5_Bottom of transition leaf
- SRP014652_B73_V7_Bottom of transition leaf
- SRP030121_ear_base_FM
- SRP030121_ear_mid_SM
- SRP030121_ear_tip_IL/SPM
- SRP030121_ra1_1mm_ear
- SRP030121_ra2_1mm
- SRP030121_ra3_1mm
- SRP030121_wt_1mm_ear
- SRP030121_ra1_2mm_ear
- SRP030121_ra2_2mm_ear
- SRP030121_ra3_2mm_ear
- SRP030121_wt_2mm_ear
- SRP030121_tassel_sig1
- SRP030121_tassel_sig2
- SRP030121_tassel_sig3
- SRP037559_embryo_10_DAP
- SRP037559_embryo_14_DAP
- SRP037559_embryo_16_DAP
- SRP037559_embryo_18_DAP
- SRP037559_embryo_20_DAP
- SRP037559_embryo_22_DAP
- SRP037559_embryo_24_DAP
- SRP037559_embryo_26_DAP
- SRP037559_embryo_28_DAP
- SRP037559_embryo_30_DAP
- SRP037559_embryo_32_DAP
- SRP037559_embryo_34_DAP
- SRP037559_embryo_36_DAP
- SRP037559_embryo_38_DAP
- SRP037559_embryo_40_DAP
- SRP037559_embryo_42_DAP
- SRP037559_embryo_44_DAP
- SRP037559_embryo_46_DAP
- SRP037559_embryo_48_DAP
- SRP037559_embryo_50_DAP
- SRP037559_embryo_52_DAP
- SRP037559_embryo_54_DAP
- SRP037559_embryo_56_DAP
- SRP037559_embryo_58_DAP
- SRP037559_embryo_60_DAP
- SRP037559_embryo_62_DAP
- SRP037559_embryo_64_DAP
- SRP037559_embryo_66_DAP
- SRP037559_embryo_68_DAP
- SRP037559_embryo_70_DAP
- SRP037559_embryo_72_DAP
- SRP037559_embryo_74_DAP
- SRP037559_embryo_76_DAP
- SRP037559_embryo_78_DAP
- SRP037559_embryo_80_DAP
- SRP037559_embryo_82_DAP
- SRP037559_embryo_84_DAP
- SRP037559_embryo_86_DAP
- SRP037559_embryo_88_DAP
- SRP037559_embryo_90_DAP
- SRP037559_embryo_92_DAP
- SRP037559_embryo_94_DAP
- SRP037559_embryo_96_DAP
- SRP037559_embryo_98_DAP
- SRP037559_embryo_100_DAP
- SRP046270_B73_Aleurone
- SRP046270_B73_starchy endosperm
- SRP047035_igt_P6 leaf primordia
- SRP047035_P7 leaf primordia
- SRP047035_P7 leaf primordia adaxial L1 blade
- SRP047035_P7 leaf primordia adaxial L1 ligule
- SRP047035_P7 leaf primordia blade
- SRP047035_P7 leaf primordia ligule
- SRP049347_8DAP_AL
- SRP049347_8DAP_BETL
- SRP049347_8DAP_CSE
- SRP049347_8DAP_CZ
- SRP049347_8DAP_ESR
- SRP049347_8DAP_PC



- Module064
- GRMZM2G026346
- GRMZM2G008657
- GRMZM2G033828
- GRMZM2G007028
- GRMZM2G021069
- GRMZM2G030768
- GRMZM2G035665
- GRMZM2G041125
- GRMZM2G044317
- GRMZM2G001160
- GRMZM2G062333
- GRMZM2G064503
- GRMZM2G065205
- GRMZM2G066101
- GRMZM2G075978
- GRMZM2G080314
- GRMZM2G074818
- GRMZM2G086934
- GRMZM2G091069
- GRMZM2G093217
- GRMZM2G096458
- GRMZM2G006452
- GRMZM2G010105
- GRMZM2G098714
- GRMZM2G100121
- GRMZM2G011615
- GRMZM2G100639
- GRMZM2G100732
- GRMZM2G112074
- GRMZM2G059010
- GRMZM2G115998
- GRMZM2G129987
- GRMZM2G130351
- GRMZM2G133895
- GRMZM2G138131
- GRMZM2G139894
- GRMZM2G154267
- GRMZM2G158293
- GRMZM2G162445
- GRMZM2G164325
- GRMZM2G165755
- GRMZM2G179424
- GRMZM2G300945
- GRMZM2G305080
- GRMZM2G327032
- GRMZM2G363408
- GRMZM2G394962
- GRMZM2G120076
- GRMZM2G396640
- GRMZM2G400718
- GRMZM2G401267
- GRMZM2G445958
- GRMZM2G450055
- GRMZM2G117238
- GRMZM5G804783
- GRMZM5G817651
- GRMZM5G825512
- GRMZM6G314950
- GRMZM2G026346_CYCA3;1
- GRMZM2G008657_AT5G52220
- GRMZM2G033828_rrb3
- GRMZM2G007028_AT4G37110
- GRMZM2G021069_MCM6
- GRMZM2G030768_AT5G43530
- GRMZM2G035665_CDT1A
- GRMZM2G041125_AT4G16970
- GRMZM2G044317_EMB2813
- GRMZM2G001160_RECQ1
- GRMZM2G062333_MCM6
- GRMZM2G064503_AT1G75150
- GRMZM2G065205_PRL
- GRMZM2G066101_MCM4
- GRMZM2G075978_MCM5
- GRMZM2G080314_BRCA1
- GRMZM2G074818_SYN3
- GRMZM2G086934_rfa1
- GRMZM2G091069_UBP21
- GRMZM2G093217_CTF18
- GRMZM2G096458_FAS1
- GRMZM2G006452_SMC2
- GRMZM2G010105_FAS1
- GRMZM2G098714_RPA70B
- GRMZM2G100121_umc1323
- GRMZM2G011615_AT5G41850
- GRMZM2G100639_MCM3
- GRMZM2G100732_emb2411
- GRMZM2G112074_PRL
- GRMZM2G059010_POLA2
- GRMZM2G115998_FBS4
- GRMZM2G129987_AT3G12170
- GRMZM2G130351_EMB2813
- GRMZM2G133895_FBS4
- GRMZM2G138131_AT4G37110
- GRMZM2G139894_MCM2
- GRMZM2G154267_DPB2
- GRMZM2G158293_AT3G56870
- GRMZM2G162445_MCM3
- GRMZM2G164325_SLD5
- GRMZM2G165755_UV14
- GRMZM2G179424_AT3G42660
- GRMZM2G300945_AT3G27640
- GRMZM2G305080_AT3G23740
- GRMZM2G327032_MCM4
- GRMZM2G363408_AT1G07270
- GRMZM2G394962_ATIM
- GRMZM2G120076_UBP21
- GRMZM2G396640_AT3G56870
- GRMZM2G400718_AT4G28310
- GRMZM2G401267_AT3G23740
- GRMZM2G445958_RPA2
- GRMZM2G450055_MCM5
- GRMZM2G117238_ORC2
- GRMZM5G804783_ETG1
- GRMZM5G817651_DRS1
- GRMZM5G825512_ORC6
- GRMZM6G314950_POLA3

Module064