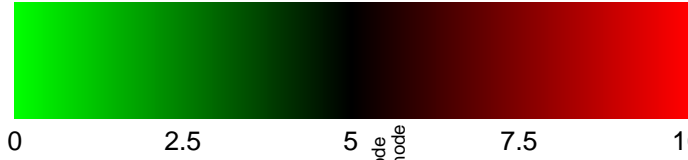


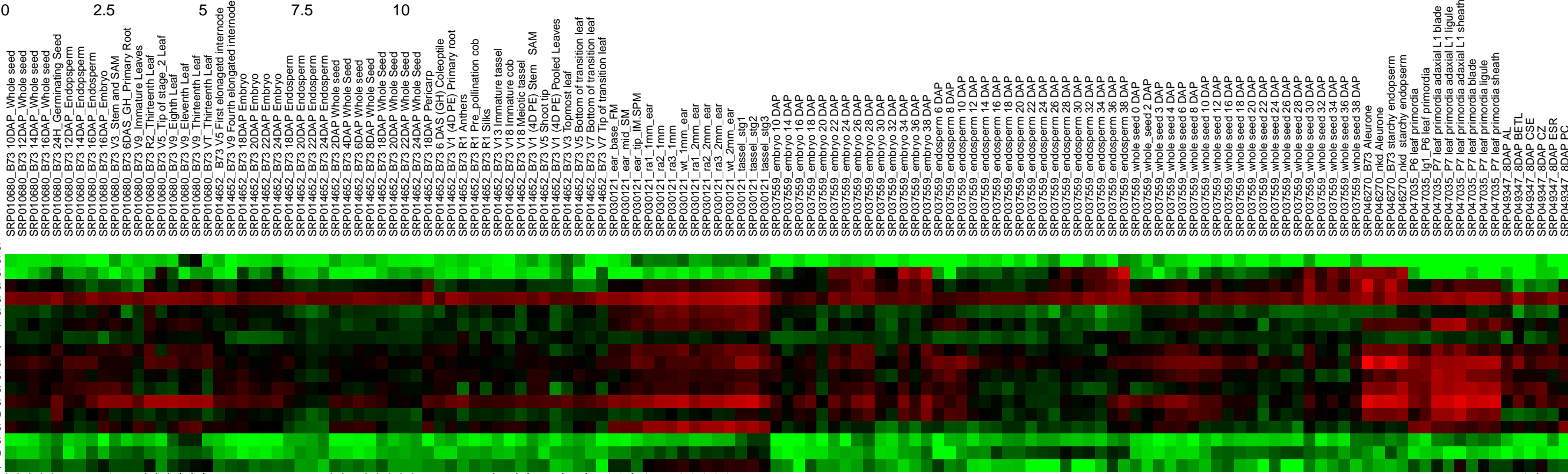
Legend : Log₂ Expression Value



0 2.5 5 7.5 10

Module185

AC207755.3_FG005
GRMZM2G075245
GRMZM2G004138
GRMZM2G084063
GRMZM2G085536
GRMZM2G078174
GRMZM2G115921
GRMZM2G124617
GRMZM2G138103
GRMZM2G096165
GRMZM2G150286
GRMZM2G175273
GRMZM2G177599
GRMZM2G341036
GRMZM2G396248
GRMZM2G158009
GRMZM5G895534



SRP010680_B73 10DAP_Whole seed
SRP010680_B73 12DAP_Whole seed
SRP010680_B73 14DAP_Whole seed
SRP010680_B73 16DAP_Whole seed
SRP010680_B73 24H_Germinating Seed
SRP010680_B73 24DAP_Endosperm
SRP010680_B73 12DAP_Endosperm
SRP010680_B73 16DAP_Endosperm
SRP010680_B73 16DAP_Embryo
SRP010680_B73 V3_Stem and SAM
SRP010680_B73 6DAS_GH_Primary Root
SRP010680_B73 V9_Immature Leaves
SRP010680_B73 R2_Thirteenth Leaf
SRP010680_B73 V5_Tip of stage_2_Leaf
SRP010680_B73 V9_Eighth Leaf
SRP010680_B73 V9_Eleventh Leaf
SRP010680_B73 V9_Thirteenth Leaf
SRP010680_B73 VT_Thirteenth Leaf
SRP014652_B73 V5_First elongated internode
SRP014652_B73 V9_Fourth elongated internode
SRP014652_B73 18DAP_Embryo
SRP014652_B73 20DAP_Embryo
SRP014652_B73 22DAP_Embryo
SRP014652_B73 24DAP_Embryo
SRP014652_B73 18DAP_Endosperm
SRP014652_B73 20DAP_Endosperm
SRP014652_B73 22DAP_Endosperm
SRP014652_B73 24DAP_Endosperm
SRP014652_B73 2DAP_Whole seed
SRP014652_B73 4DAP_Whole Seed
SRP014652_B73 6DAP_Whole Seed
SRP014652_B73 8DAP_Whole Seed
SRP014652_B73 18DAP_Whole Seed
SRP014652_B73 20DAP_Whole Seed
SRP014652_B73 22DAP_Whole Seed
SRP014652_B73 24DAP_Whole Seed
SRP014652_B73 6DAS (GH) Coleoptile
SRP014652_B73 V1 (4D PE) Primary root
SRP014652_B73 R1 Anthers
SRP014652_B73 R1 Pre_pollination cob
SRP014652_B73 R1 Silks
SRP014652_B73 V13 Immature tassel
SRP014652_B73 V18 Immature cob
SRP014652_B73 V18 Meiotic tassel
SRP014652_B73 V1 (4D PE) Stem SAM
SRP014652_B73 V5 Shoot tip
SRP014652_B73 V1 (4D PE) Pooled Leaves
SRP014652_B73 V3 Topmost leaf
SRP014652_B73 V5 Bottom of transition leaf
SRP014652_B73 V7 Bottom of transition leaf
SRP030121_ear_base_FM
SRP030121_ear_mid_SM
SRP030121_ear_tip_ILM_SPM
SRP030121_ear_1mm_ear
SRP030121_ear_1mm_ear
SRP030121_ear_2mm_ear
SRP030121_ear_2mm_ear
SRP030121_ear_2mm_ear
SRP030121_ear_2mm_ear
SRP030121_tassel_stg1
SRP030121_tassel_stg2
SRP030121_tassel_stg3
SRP037559_embryo 10 DAP
SRP037559_embryo 14 DAP
SRP037559_embryo 16 DAP
SRP037559_embryo 18 DAP
SRP037559_embryo 20 DAP
SRP037559_embryo 22 DAP
SRP037559_embryo 24 DAP
SRP037559_embryo 26 DAP
SRP037559_embryo 28 DAP
SRP037559_embryo 30 DAP
SRP037559_embryo 32 DAP
SRP037559_embryo 34 DAP
SRP037559_embryo 36 DAP
SRP037559_embryo 38 DAP
SRP037559_endosperm 6 DAP
SRP037559_endosperm 8 DAP
SRP037559_endosperm 10 DAP
SRP037559_endosperm 12 DAP
SRP037559_endosperm 14 DAP
SRP037559_endosperm 16 DAP
SRP037559_endosperm 18 DAP
SRP037559_endosperm 20 DAP
SRP037559_endosperm 22 DAP
SRP037559_endosperm 24 DAP
SRP037559_endosperm 26 DAP
SRP037559_endosperm 28 DAP
SRP037559_endosperm 30 DAP
SRP037559_endosperm 32 DAP
SRP037559_endosperm 34 DAP
SRP037559_endosperm 36 DAP
SRP037559_endosperm 38 DAP
SRP037559_whole_seed 0 DAP
SRP037559_whole_seed 2 DAP
SRP037559_whole_seed 3 DAP
SRP037559_whole_seed 4 DAP
SRP037559_whole_seed 6 DAP
SRP037559_whole_seed 8 DAP
SRP037559_whole_seed 10 DAP
SRP037559_whole_seed 12 DAP
SRP037559_whole_seed 16 DAP
SRP037559_whole_seed 18 DAP
SRP037559_whole_seed 20 DAP
SRP037559_whole_seed 22 DAP
SRP037559_whole_seed 24 DAP
SRP037559_whole_seed 26 DAP
SRP037559_whole_seed 28 DAP
SRP037559_whole_seed 30 DAP
SRP037559_whole_seed 32 DAP
SRP037559_whole_seed 34 DAP
SRP037559_whole_seed 36 DAP
SRP037559_whole_seed 38 DAP
SRP046270_nkd_Aleurone
SRP046270_B73 Aleurone
SRP046270_B73 starchy endosperm
SRP047035_nkd starchy endosperm
SRP047035_P6 leaf primordia
SRP047035_P7 leaf primordia
SRP047035_P7 leaf primordia adaxial L1 blade
SRP047035_P7 leaf primordia adaxial L1 sheath
SRP047035_P7 leaf primordia ligule
SRP047035_P7 leaf primordia sheath
SRP049347_8DAP_AL
SRP049347_8DAP_BETL
SRP049347_8DAP_CSE
SRP049347_8DAP_CZ
SRP049347_8DAP_ESR
SRP049347_8DAP_PC

Module185

AC207755.3_FG005 CAT6
GRMZM2G075245 AT5G05220
GRMZM2G004138 CCoAOMT1
GRMZM2G084063 AT2G23090
GRMZM2G085536 AT5G55140
GRMZM2G078174 AT4G39300
GRMZM2G115921 AT1G09920
GRMZM2G124617 AT3G24100
GRMZM2G138103 AT1G27530
GRMZM2G096165 AT5G20180
GRMZM2G150286 AT4G39300
GRMZM2G175273 AT3G24100
GRMZM2G177599 AT5G61220
GRMZM2G341036 AT1G65720
GRMZM2G396248 CYP94C1
GRMZM2G158009
GRMZM5G895534 AT1G50740