

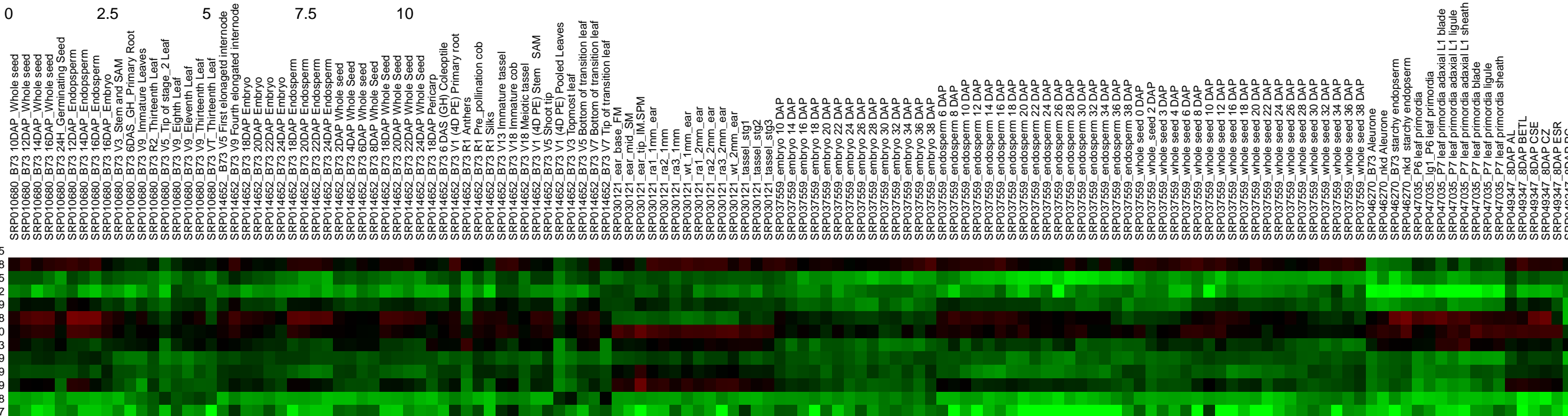
Legend : Log<sub>2</sub> Expression Value



0 2.5 5 7.5 10

Module265

AC191771.3\_FG008  
GRMZM2G007385  
GRMZM2G049952  
GRMZM2G049429  
GRMZM2G069208  
GRMZM2G100620  
GRMZM2G119513  
GRMZM2G161009  
GRMZM2G170699  
GRMZM2G102639  
GRMZM2G415538  
GRMZM5G829967



SRP010680 B73 10DAP Whole seed  
SRP010680 B73 12DAP Whole seed  
SRP010680 B73 14DAP Whole seed  
SRP010680 B73 16DAP Whole seed  
SRP010680 B73 24H Germinating Seed  
SRP010680 B73 12DAP\_Endosperm  
SRP010680 B73 14DAP\_Endosperm  
SRP010680 B73 16DAP\_Endosperm  
SRP010680 B73 V3\_Stem and SAM  
SRP010680 B73 V3\_Stem and SAM  
SRP010680 B73 V9\_Immature Leaves  
SRP010680 B73 V2\_Thirteenth Leaf  
SRP010680 B73 V5\_Tip of stage\_2\_Leaf  
SRP010680 B73 V9\_Eighth Leaf  
SRP010680 B73 V9\_Eleventh Leaf  
SRP010680 B73 V9\_Thirteenth Leaf  
SRP010680 B73 VT\_Thirteenth Leaf  
SRP014652 B73 V5\_First elongated internode  
SRP014652 B73 V9\_Fourth elongated internode  
SRP014652 B73 18DAP Embryo  
SRP014652 B73 20DAP Embryo  
SRP014652 B73 22DAP Embryo  
SRP014652 B73 24DAP Embryo  
SRP014652 B73 18DAP\_Endosperm  
SRP014652 B73 20DAP\_Endosperm  
SRP014652 B73 22DAP\_Endosperm  
SRP014652 B73 24DAP\_Endosperm  
SRP014652 B73 2DAP Whole seed  
SRP014652 B73 4DAP Whole Seed  
SRP014652 B73 6DAP Whole Seed  
SRP014652 B73 8DAP Whole Seed  
SRP014652 B73 18DAP Pericarp  
SRP014652 B73 6 DAS (GH) Coleoptile  
SRP014652 B73 V1 (4D PE) Primary root  
SRP014652 B73 R1 Anthers  
SRP014652 B73 R1\_Pte\_pollination cob  
SRP014652 B73 R1\_Silks  
SRP014652 B73 V18 Immature tassell  
SRP014652 B73 V18 Immature cob  
SRP014652 B73 V18 Meiotic tassell  
SRP014652 B73 V1 (4D PE) Stem SAM  
SRP014652 B73 V5 Shoot tip  
SRP014652 B73 V1 (4D PE) Pooled Leaves  
SRP014652 B73 V3 Topmost leaf  
SRP014652 B73 V5 Bottom of transition leaf  
SRP014652 B73 V7 Bottom of transition leaf  
SRP014652 B73 V7 Tip of transition leaf  
SRP030121 ear\_base\_FM  
SRP030121 ear\_mid\_FM  
SRP030121 ear\_tip\_IM\_SPM  
SRP030121 ra1\_1mm\_ear  
SRP030121 ra2\_1mm  
SRP030121 ra3\_1mm  
SRP030121 wt\_1mm\_ear  
SRP030121 ra1\_2mm\_ear  
SRP030121 ra2\_2mm\_ear  
SRP030121 ra3\_2mm\_ear  
SRP030121 wt\_2mm\_ear  
SRP030121 tassell\_sigt1  
SRP030121 tassell\_sigt2  
SRP030121 tassell\_sigt3  
SRP037559 embryo 10 DAP  
SRP037559 embryo 14 DAP  
SRP037559 embryo 16 DAP  
SRP037559 embryo 18 DAP  
SRP037559 embryo 20 DAP  
SRP037559 embryo 22 DAP  
SRP037559 embryo 24 DAP  
SRP037559 embryo 26 DAP  
SRP037559 embryo 28 DAP  
SRP037559 embryo 30 DAP  
SRP037559 embryo 32 DAP  
SRP037559 embryo 34 DAP  
SRP037559 embryo 36 DAP  
SRP037559 embryo 38 DAP  
SRP037559 whole seed 0 DAP  
SRP037559 whole seed 2 DAP  
SRP037559 whole seed 3 DAP  
SRP037559 whole seed 4 DAP  
SRP037559 whole seed 6 DAP  
SRP037559 whole seed 8 DAP  
SRP037559 whole seed 10 DAP  
SRP037559 whole seed 12 DAP  
SRP037559 whole seed 16 DAP  
SRP037559 whole seed 18 DAP  
SRP037559 whole seed 20 DAP  
SRP037559 whole seed 22 DAP  
SRP037559 whole seed 24 DAP  
SRP037559 whole seed 26 DAP  
SRP037559 whole seed 28 DAP  
SRP037559 whole seed 30 DAP  
SRP037559 whole seed 32 DAP  
SRP037559 whole seed 34 DAP  
SRP037559 whole seed 36 DAP  
SRP037559 whole seed 38 DAP  
SRP046270 nkd\_Aleurone  
SRP046270 B73 Aleurone  
SRP046270 B73 starchy endosperm  
SRP047035 P6 leaf primordia  
SRP047035 lg1\_P6 leaf primordia  
SRP047035 P7 leaf primordia adaxial L1 blade  
SRP047035 P7 leaf primordia adaxial L1 ligule  
SRP047035 P7 leaf primordia adaxial L1 sheath  
SRP047035 P7 leaf primordia ligule  
SRP049347 8DAP AL  
SRP049347 8DAP BETL  
SRP049347 8DAP CSE  
SRP049347 8DAP CZ  
SRP049347 8DAP ESR  
SRP049347\_8DAP PC

Module265

AC191771.3\_FG008 AT3G51100  
GRMZM2G007385 PDIL5-2  
GRMZM2G049952  
GRMZM2G049429 PUR ALPHA-1  
GRMZM2G069208 PUR ALPHA-1  
GRMZM2G100620 AT2G32600  
GRMZM2G119513 AT4G16695  
GRMZM2G161009 bzip96  
GRMZM2G170699 emb2444  
GRMZM2G102639 emb2444  
GRMZM2G415538 AT5G19210  
GRMZM5G829967 FUS6