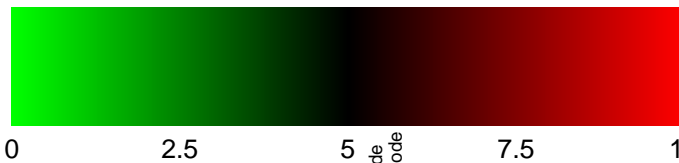
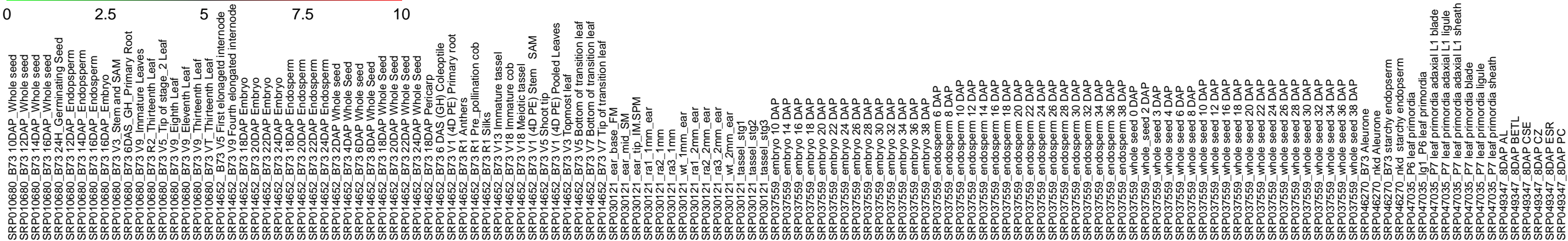


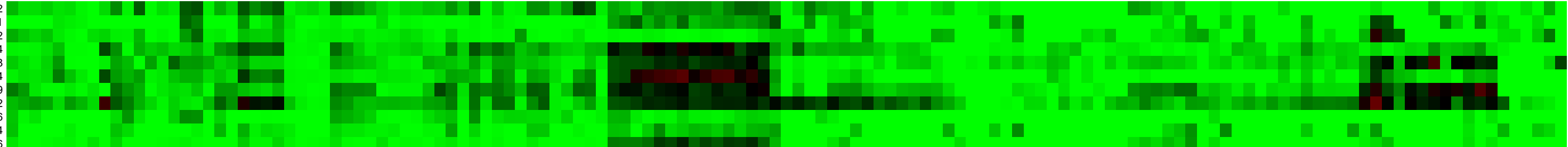
Legend : Log<sub>2</sub> Expression Value



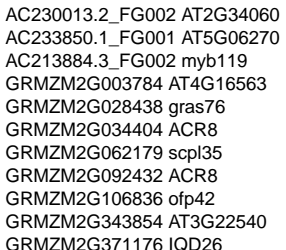
0 2.5 5 7.5 10



Module306



Module306



SRP010680\_B73\_10DAP\_Whole seed  
SRP010680\_B73\_12DAP\_Whole seed  
SRP010680\_B73\_14DAP\_Whole seed  
SRP010680\_B73\_16DAP\_Whole seed  
SRP010680\_B73\_24H\_Germinating Seed  
SRP010680\_B73\_12DAP\_Endosperm  
SRP010680\_B73\_14DAP\_Endosperm  
SRP010680\_B73\_16DAP\_Endosperm  
SRP010680\_B73\_18DAP\_Endosperm  
SRP010680\_B73\_24H\_Embryo  
SRP010680\_B73\_V3\_Stem and SAM  
SRP010680\_B73\_6DAS\_GH\_Primary Root  
SRP010680\_B73\_V9\_Immature Leaves  
SRP010680\_B73\_R2\_Thirteenth Leaf  
SRP010680\_B73\_V5\_Tip of stage\_2\_Leaf  
SRP010680\_B73\_V9\_Eighth Leaf  
SRP010680\_B73\_V9\_Eleventh Leaf  
SRP010680\_B73\_V9\_Thirteenth Leaf  
SRP010680\_B73\_VT\_Thirteenth Leaf  
SRP014652\_B73\_V5\_First\_elongated internode  
SRP014652\_B73\_V9\_Fourth\_elongated internode  
SRP014652\_B73\_18DAP\_Embryo  
SRP014652\_B73\_20DAP\_Embryo  
SRP014652\_B73\_22DAP\_Embryo  
SRP014652\_B73\_24DAP\_Embryo  
SRP014652\_B73\_18DAP\_Endosperm  
SRP014652\_B73\_20DAP\_Endosperm  
SRP014652\_B73\_22DAP\_Endosperm  
SRP014652\_B73\_24DAP\_Endosperm  
SRP014652\_B73\_8DAP\_Whole Seed  
SRP014652\_B73\_18DAP\_Whole Seed  
SRP014652\_B73\_20DAP\_Whole Seed  
SRP014652\_B73\_22DAP\_Whole Seed  
SRP014652\_B73\_24DAP\_Whole Seed  
SRP014652\_B73\_6\_DAS\_(GH)\_Coleoptile  
SRP014652\_B73\_R1\_Anthers  
SRP014652\_B73\_R1\_Pre\_pollination cob  
SRP014652\_B73\_R1\_Silks  
SRP014652\_B73\_V13\_Immature tassel  
SRP014652\_B73\_V18\_Immature cob  
SRP014652\_B73\_V18\_Meiotic tassel  
SRP014652\_B73\_V1\_(4D PE)\_Stem SAM  
SRP014652\_B73\_V3\_Shoot tip  
SRP014652\_B73\_V5\_Topmost leaf  
SRP014652\_B73\_V5\_Bottom of transition leaf  
SRP014652\_B73\_V7\_Tip of transition leaf  
SRP030121\_ear\_base\_FM  
SRP030121\_ear\_mid\_SM  
SRP030121\_ear\_tip\_IM\_SPM  
SRP030121\_ra1\_1mm\_ear  
SRP030121\_ra2\_1mm\_ear  
SRP030121\_ra3\_1mm\_ear  
SRP030121\_wt\_1mm\_ear  
SRP030121\_ra1\_2mm\_ear  
SRP030121\_ra2\_2mm\_ear  
SRP030121\_ra3\_2mm\_ear  
SRP030121\_wt\_2mm\_ear  
SRP030121\_tassel\_stg1  
SRP030121\_tassel\_stg2  
SRP030121\_tassel\_stg3  
SRP037559\_embryo\_10\_DAP  
SRP037559\_embryo\_14\_DAP  
SRP037559\_embryo\_16\_DAP  
SRP037559\_embryo\_18\_DAP  
SRP037559\_embryo\_20\_DAP  
SRP037559\_embryo\_22\_DAP  
SRP037559\_embryo\_24\_DAP  
SRP037559\_embryo\_26\_DAP  
SRP037559\_embryo\_28\_DAP  
SRP037559\_embryo\_30\_DAP  
SRP037559\_embryo\_32\_DAP  
SRP037559\_embryo\_34\_DAP  
SRP037559\_embryo\_36\_DAP  
SRP037559\_embryo\_38\_DAP  
SRP037559\_endosperm\_6\_DAP  
SRP037559\_endosperm\_8\_DAP  
SRP037559\_endosperm\_10\_DAP  
SRP037559\_endosperm\_12\_DAP  
SRP037559\_endosperm\_14\_DAP  
SRP037559\_endosperm\_16\_DAP  
SRP037559\_endosperm\_18\_DAP  
SRP037559\_endosperm\_20\_DAP  
SRP037559\_endosperm\_22\_DAP  
SRP037559\_endosperm\_24\_DAP  
SRP037559\_endosperm\_26\_DAP  
SRP037559\_endosperm\_28\_DAP  
SRP037559\_endosperm\_30\_DAP  
SRP037559\_endosperm\_32\_DAP  
SRP037559\_endosperm\_34\_DAP  
SRP037559\_endosperm\_36\_DAP  
SRP037559\_endosperm\_38\_DAP  
SRP037559\_whole seed\_0\_DAP  
SRP037559\_whole seed\_2\_DAP  
SRP037559\_whole seed\_3\_DAP  
SRP037559\_whole seed\_4\_DAP  
SRP037559\_whole seed\_6\_DAP  
SRP037559\_whole seed\_8\_DAP  
SRP037559\_whole seed\_10\_DAP  
SRP037559\_whole seed\_12\_DAP  
SRP037559\_whole seed\_16\_DAP  
SRP037559\_whole seed\_18\_DAP  
SRP037559\_whole seed\_20\_DAP  
SRP037559\_whole seed\_22\_DAP  
SRP037559\_whole seed\_24\_DAP  
SRP037559\_whole seed\_26\_DAP  
SRP037559\_whole seed\_28\_DAP  
SRP037559\_whole seed\_30\_DAP  
SRP037559\_whole seed\_32\_DAP  
SRP037559\_whole seed\_34\_DAP  
SRP037559\_whole seed\_36\_DAP  
SRP037559\_whole seed\_38\_DAP  
SRP046270\_B73\_Aleurone  
SRP046270\_B73\_starchy endosperm  
SRP047035\_nkd\_starchy endosperm  
SRP047035\_lg1\_P6 leaf primordia  
SRP047035\_P7 leaf primordia  
SRP047035\_P7 leaf primordia adaxial L1 blade  
SRP047035\_P7 leaf primordia adaxial L1 ligule  
SRP047035\_P7 leaf primordia blade  
SRP047035\_P7 leaf primordia ligule  
SRP049347\_8DAP\_AL  
SRP049347\_8DAP\_BETL  
SRP049347\_8DAP\_CSE  
SRP049347\_8DAP\_CZ  
SRP049347\_8DAP\_ESR  
SRP049347\_8DAP\_PC