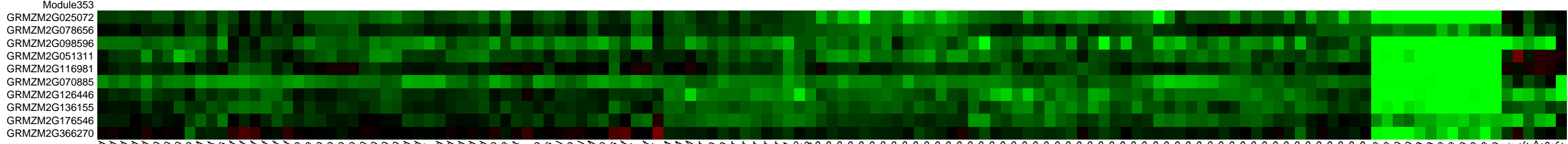
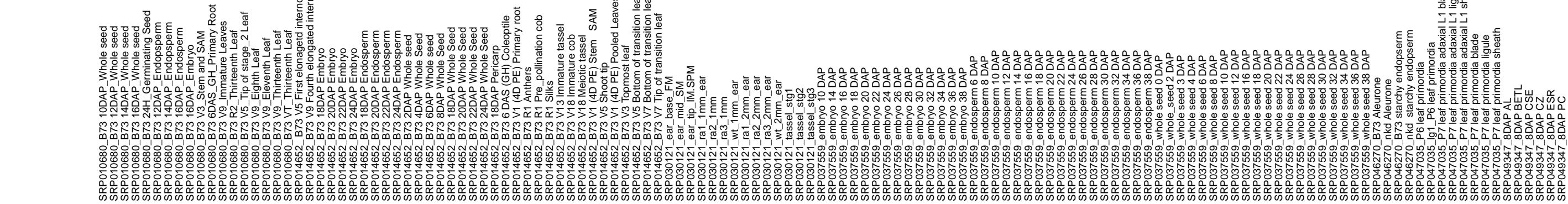
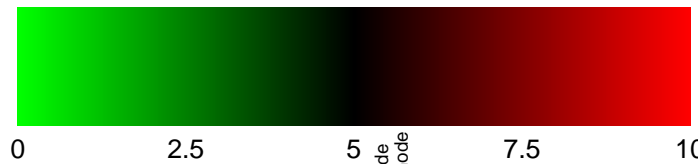


Legend : Log₂ Expression Value



SRP010680 B73 10DAP Whole seed
SRP010680 B73 12DAP Whole seed
SRP010680 B73 14DAP Whole seed
SRP010680 B73 16DAP Whole seed
SRP010680 B73 24H Germinating Seed
SRP010680 B73 24DAP Endosperm
SRP010680 B73 14DAP Endosperm
SRP010680 B73 16DAP Endosperm
SRP010680 B73 V3 Stem and SAM
SRP010680 B73 V3 Immature Root
SRP010680 B73 V3 Stem and SAM
SRP010680 B73 V3 Immature Leaves
SRP010680 B73 R2 Thirteenth Leaf
SRP010680 B73 V5 Tip of stage 2 Leaf
SRP010680 B73 V9 Eighth Leaf
SRP010680 B73 V9 Eleventh Leaf
SRP010680 B73 V9 Thirteenth Leaf
SRP010680 B73 V9 Thirteenth Leaf
SRP010680 B73 V5 First elongated internode
SRP014652 B73 V9 Fourth elongated internode
SRP014652 B73 18DAP Embryo
SRP014652 B73 20DAP Embryo
SRP014652 B73 22DAP Embryo
SRP014652 B73 24DAP Embryo
SRP014652 B73 18DAP Endosperm
SRP014652 B73 20DAP Endosperm
SRP014652 B73 22DAP Endosperm
SRP014652 B73 24DAP Endosperm
SRP014652 B73 2DAP Whole seed
SRP014652 B73 4DAP Whole Seed
SRP014652 B73 6DAP Whole Seed
SRP014652 B73 8DAP Whole Seed
SRP014652 B73 18DAP Whole Seed
SRP014652 B73 22DAP Whole Seed
SRP014652 B73 24DAP Whole Seed
SRP014652 B73 6 DAS (GH) Coleoptile
SRP014652 B73 R1 Anthers
SRP014652 B73 R1 Pre_pollination cob
SRP014652 B73 R1 Silks
SRP014652 B73 V3 Immature tassell
SRP014652 B73 V8 Meiotic tassell
SRP014652 B73 V1 (4D PE) Stem SAM
SRP014652 B73 V5 Shoot tip
SRP014652 B73 V3 Immature tassell
SRP014652 B73 V3 Topmost leaf
SRP014652 B73 V5 Bottom of transition leaf
SRP014652 B73 V7 Bottom of transition leaf
SRP030121 ear_base_FM
SRP030121 ear_tip_IM_SPM
SRP030121 ra1_1mm_ear
SRP030121 ra2_1mm
SRP030121 ra3_1mm
SRP030121 wt_1mm_ear
SRP030121 ra1_2mm_ear
SRP030121 ra2_2mm_ear
SRP030121 ra3_2mm_ear
SRP030121 wt_2mm_ear
SRP030121 tassell_stg1
SRP030121 tassell_stg2
SRP030121 tassell_stg3
SRP037559 embryo 14 DAP
SRP037559 embryo 16 DAP
SRP037559 embryo 18 DAP
SRP037559 embryo 20 DAP
SRP037559 embryo 22 DAP
SRP037559 embryo 24 DAP
SRP037559 embryo 26 DAP
SRP037559 embryo 28 DAP
SRP037559 embryo 30 DAP
SRP037559 embryo 32 DAP
SRP037559 embryo 34 DAP
SRP037559 embryo 36 DAP
SRP037559 endosperm 6 DAP
SRP037559 endosperm 8 DAP
SRP037559 endosperm 10 DAP
SRP037559 endosperm 12 DAP
SRP037559 endosperm 14 DAP
SRP037559 endosperm 16 DAP
SRP037559 endosperm 18 DAP
SRP037559 endosperm 20 DAP
SRP037559 endosperm 22 DAP
SRP037559 endosperm 24 DAP
SRP037559 endosperm 26 DAP
SRP037559 endosperm 28 DAP
SRP037559 endosperm 30 DAP
SRP037559 endosperm 32 DAP
SRP037559 endosperm 34 DAP
SRP037559 whole seed 0 DAP
SRP037559 whole seed 2 DAP
SRP037559 whole seed 3 DAP
SRP037559 whole seed 4 DAP
SRP037559 whole seed 6 DAP
SRP037559 whole seed 8 DAP
SRP037559 whole seed 10 DAP
SRP037559 whole seed 12 DAP
SRP037559 whole seed 16 DAP
SRP037559 whole seed 18 DAP
SRP037559 whole seed 20 DAP
SRP037559 whole seed 22 DAP
SRP037559 whole seed 24 DAP
SRP037559 whole seed 26 DAP
SRP037559 whole seed 28 DAP
SRP037559 whole seed 30 DAP
SRP046270 B73 Aleurone
SRP046270 B73 starchy endosperm
SRP047035 P6 leaf primordia
SRP047035 P7 leaf primordia
SRP047035 P7 leaf primordia adaxial L1 blade
SRP047035 P7 leaf primordia adaxial L1 ligule
SRP047035 P7 leaf primordia ligule
SRP049347 8DAP AL
SRP049347 8DAP BETL
SRP049347 8DAP CSE
SRP049347 8DAP CZ
SRP049347 8DAP ESR
SRP049347 8DAP PC

Module353

GRMZM2G025072 AT4G14930
GRMZM2G078656 AT4G14930
GRMZM2G098596
GRMZM2G051311 AT5G32470
GRMZM2G116981
GRMZM2G070885 jmj5
GRMZM2G126446 AT5G63220
GRMZM2G136155
GRMZM2G176546 LACS6
GRMZM2G366270 AT1G25682