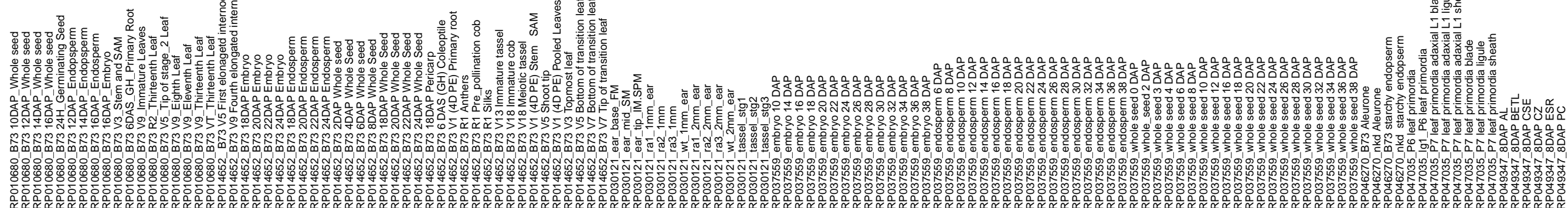


Legend : Log<sub>2</sub> Expression Value

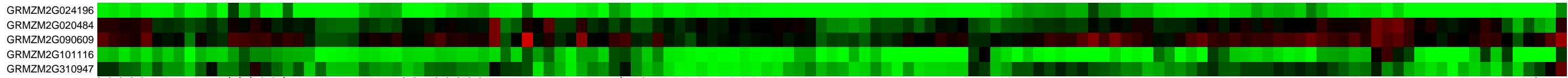


0 2.5 5 7.5 10



SRP010680\_B73 10DAP\_Whole seed  
SRP010680\_B73 12DAP\_Whole seed  
SRP010680\_B73 14DAP\_Whole seed  
SRP010680\_B73 24H\_Germinating Seed  
SRP010680\_B73 24H\_Embryo  
SRP010680\_B73 12DAP\_Endosperm  
SRP010680\_B73 14DAP\_Endosperm  
SRP010680\_B73 16DAP\_Endosperm  
SRP010680\_B73 16DAP\_Embryo  
SRP010680\_B73 V3 Stem and SAM  
SRP010680\_B73 V3\_1mature Leaves  
SRP010680\_B73 V9\_Thirteenth Leaf  
SRP010680\_B73 V9\_Thirteenth Leaf  
SRP010680\_B73 V5\_Tip of stage\_2\_Leaf  
SRP010680\_B73 V9\_Eighth\_Leaf  
SRP010680\_B73 V9\_Eleventh\_Leaf  
SRP010680\_B73 V9\_Thirteenth Leaf  
SRP010680\_B73 VT\_Thirteenth Leaf  
SRP014652\_B73 V5\_First\_elongated internode  
SRP014652\_B73 V9\_Fourth\_elongated internode  
SRP014652\_B73 18DAP\_Embryo  
SRP014652\_B73 20DAP\_Embryo  
SRP014652\_B73 22DAP\_Embryo  
SRP014652\_B73 24DAP\_Embryo  
SRP014652\_B73 18DAP\_Endosperm  
SRP014652\_B73 20DAP\_Endosperm  
SRP014652\_B73 22DAP\_Endosperm  
SRP014652\_B73 24DAP\_Endosperm  
SRP014652\_B73 2DAP\_Whole seed  
SRP014652\_B73 4DAP\_Whole seed  
SRP014652\_B73 8DAP\_Whole seed  
SRP014652\_B73 18DAP\_Whole seed  
SRP014652\_B73 20DAP\_Whole seed  
SRP014652\_B73 22DAP\_Whole seed  
SRP014652\_B73 24DAP\_Whole seed  
SRP014652\_B73 V1\_4D PE Coleoptile  
SRP014652\_B73 R1 Anthers  
SRP014652\_B73 R1 Pre\_pollination cob  
SRP014652\_B73 R1 Silks  
SRP014652\_B73 V13 Immature tassell  
SRP014652\_B73 V18 Immature cob  
SRP014652\_B73 V18 Meiotic tassell  
SRP014652\_B73 V1 (4D PE) Stem SAM  
SRP014652\_B73 V5 Shoot tip  
SRP014652\_B73 V1 (4D PE) Pooled Leaves  
SRP014652\_B73 V3 Topmost leaf  
SRP014652\_B73 V5 Bottom of transition leaf  
SRP014652\_B73 V7 Bottom of transition leaf  
SRP030121\_ear\_base\_FM  
SRP030121\_ear\_mid\_SM  
SRP030121\_ear\_tip\_IM\_SPM  
SRP030121\_ra1\_1mm\_ear  
SRP030121\_ra2\_1mm  
SRP030121\_ra3\_1mm  
SRP030121\_wt\_1mm\_ear  
SRP030121\_ra1\_2mm\_ear  
SRP030121\_ra2\_2mm\_ear  
SRP030121\_ra3\_2mm\_ear  
SRP030121\_wt\_2mm\_ear  
SRP030121\_tassel\_stg1  
SRP030121\_tassel\_stg2  
SRP037559\_embryo10\_DAP  
SRP037559\_embryo14\_DAP  
SRP037559\_embryo16\_DAP  
SRP037559\_embryo18\_DAP  
SRP037559\_embryo20\_DAP  
SRP037559\_embryo22\_DAP  
SRP037559\_embryo24\_DAP  
SRP037559\_embryo26\_DAP  
SRP037559\_embryo28\_DAP  
SRP037559\_embryo30\_DAP  
SRP037559\_embryo32\_DAP  
SRP037559\_embryo34\_DAP  
SRP037559\_embryo36\_DAP  
SRP037559\_embryo38\_DAP  
SRP037559\_endosperm6\_DAP  
SRP037559\_endosperm8\_DAP  
SRP037559\_endosperm10\_DAP  
SRP037559\_endosperm12\_DAP  
SRP037559\_endosperm14\_DAP  
SRP037559\_endosperm16\_DAP  
SRP037559\_endosperm18\_DAP  
SRP037559\_endosperm20\_DAP  
SRP037559\_endosperm22\_DAP  
SRP037559\_endosperm24\_DAP  
SRP037559\_endosperm26\_DAP  
SRP037559\_endosperm28\_DAP  
SRP037559\_endosperm30\_DAP  
SRP037559\_endosperm32\_DAP  
SRP037559\_endosperm34\_DAP  
SRP037559\_endosperm36\_DAP  
SRP037559\_endosperm38\_DAP  
SRP037559\_wholeshoot0\_DAP  
SRP037559\_wholeshoot3\_DAP  
SRP037559\_wholeshoot4\_DAP  
SRP037559\_wholeshoot6\_DAP  
SRP037559\_wholeshoot8\_DAP  
SRP037559\_wholeshoot10\_DAP  
SRP037559\_wholeshoot12\_DAP  
SRP037559\_wholeshoot16\_DAP  
SRP037559\_wholeshoot18\_DAP  
SRP037559\_wholeshoot20\_DAP  
SRP037559\_wholeshoot22\_DAP  
SRP037559\_wholeshoot24\_DAP  
SRP037559\_wholeshoot26\_DAP  
SRP037559\_wholeshoot28\_DAP  
SRP037559\_wholeshoot30\_DAP  
SRP037559\_wholeshoot32\_DAP  
SRP037559\_wholeshoot34\_DAP  
SRP037559\_wholeshoot36\_DAP  
SRP037559\_wholeshoot38\_DAP  
SRP046270\_nkd\_Aleurone  
SRP046270\_B73 starchy endosperm  
SRP047035\_P6 leaf primordia  
SRP047035\_P7 leaf primordia  
SRP047035\_P7 leaf primordia adaxial L1 blade  
SRP047035\_P7 leaf primordia adaxial L1 ligule  
SRP047035\_P7 leaf primordia ligule  
SRP049347\_8DAP\_AL  
SRP049347\_8DAP\_BETL  
SRP049347\_8DAP\_CSE  
SRP049347\_8DAP\_CZ  
SRP049347\_8DAP\_ESR  
SRP049347\_8DAP\_PC

Module805



GRMZM2G024196  
GRMZM2G020484  
GRMZM2G090609  
GRMZM2G101116  
GRMZM2G310947

Module805

GRMZM2G024196 YSL7  
GRMZM2G020484 PTR1  
GRMZM2G090609 CLO4  
GRMZM2G101116 AT2G43120  
GRMZM2G310947 AATP1